



Your Engineering Partner

**We are Manufacturers, Exporters &
Suppliers of Precise Auto Components &
Engineering Components.**



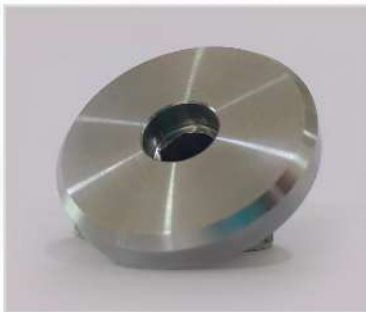
www.apcplgroup.com

Welcome to **Accurate Precision Component Pvt. Ltd.**

For developing precise auto components and engineering components, we, Accurate Precision Component Pvt. Ltd. have grown from strength to strength by learning from our experience that is capable of achieving a leading position in the industry. Started our operation in the year 2009, today, we are reckoned as one of the reputed manufacturers, exporters and suppliers of Precision Auto Parts such as Precision Turned Automobile Parts, Two Wheeler Turned Parts, Bushes, Main Stand Shafts, Cam Shaft Flanges, Rocker Arm Shafts, Pin Dowels, & many more.

Used in two wheeler and four wheeler, all these products are catered to the requirements of automobile industry. Continuous improvements and commitment to quality are the foundation of our organization and hence, we offer only those automobile products that are demanded for easy installation, strong design, high precision value and other traits.

We are backed by a team of talented people, who are engaged in practicing continuous improvements as a way of working & willing to go extra mile for achieving optimum results.





Made of Bar Stock, Forging & Casting Products with Sub. Assembly & Assembly

APCPL's machining factory is fully equipped with state-of-the-art equipment and in-house engineering services. We employ experienced, professional staff to ensure consistent compliance with your engineering specifications. APCPL provides high-quality, tight-tolerance components machined from bar stock. APCPL also finishes as-cast and as-forged components. Additionally, we perform all necessary secondary operations on finished / semi-finished parts such as heat treatment, surface treatment etc.

The brake component market is one of the flourishing sectors of the whole automobile industry. Brake parts used in automobiles these days are manufactured using advanced equipment, upgraded technology and automatically controlled process.

These components are strictly checked keeping into view the requisite norms of automotive industry. Our components of Engine components of Tappets, Retainers & timing Gears.



Your Engineering Partner

A High Level Quality Control in Compliance With National and International Standards

Presently, we have successfully reached many countries. Being efficient in providing enough care to all the products delivered and exported...



Germany



France



USA



Italy




Canada



Accurate Precision Components Pvt. Ltd.

Survey No.126, Plot No. 75, SIDC Main Road, Nr. Shantidham,
Veraval (Shapar) – 360024, Dist: Rajkot,(GUJ.) INDIA

 info@apcplgroup.com | kishan@apcplgroup.com

 www.apcplgroup.com |  +91 99099 49953 | +91 78781 76494

