



**Unique Collection of
Engineering Components From
Diverse Segments.**



Welcome to APCPL

Accurate Precision Component Pvt. Ltd. has been built on engineering excellence crafted through unstinted dedication to quality, innovation, and a constant objective to serve the global market. The company aims to meet customers' quality benchmarks at an outstanding value.

Currently, We offer a one-stop shop for Turned Parts and machined parts to our global customers. We achieve greater engineering excellence with our global quality benchmarks.

Why Accurate

- ▶ International quality products at a competitive price.
- ▶ Lean, Flat and Focused Organization.
- ▶ Integrated ERP system for all major functions.
- ▶ Maintains full Lot Traceability through the Job card system.
- ▶ In-house Tool-room facility.

Our Mission

We are committed to be a world-class, precision machine shop. We will do this by providing our customers product that is exceptional in quality, while maintaining a flexible delivery schedule tailored to their needs. We will value our relationships with our customers and our employees and will continue to accept and be responsive to their changing needs with honesty and integrity.

Our Vision

“If you aim for nothing, you’ll hit it everywhere. Don’t leave anything in your business to chance.” We believe in simple not the complex. We believe in deep collaboration and cross-pollination of our group which allow us to grow and develop in a way that others can’t shine like us. We shall strive vigorously to delight our extensive network of clients- who are our very purpose. Honestly, we don’t settle for anything less than excellence and innovation through committed team work.

Company Overview

- Company was established in 2009 with a vision to serve customers of Turned & Machined parts.
- Directors are Graduates in Mechanical Engineering with exhaustive experience
- Present capacity: 100K Parts per month based on parts size & volume
- Spare Capacity: 43% of present capacity to meet customers' growing demand.
- Accurate Precision is Registered Export House as a manufacturer.
- Major customers are located in US, Europe.
- ISO 9001:2015, 14001:2015, 45001:2018 & IATF 16949 from TUV-SUD.
- Equipped with 8 CNC Machines, 6 VMC Machines, 2 Drilling Machines.
- Material handlings of – Stainless Steel 34%, Carbon Steel 36% & Non Ferrous 30%.
- Export Business – 91%
- Total Employees – 50+

Sheet Metal Component



Aluminium Component



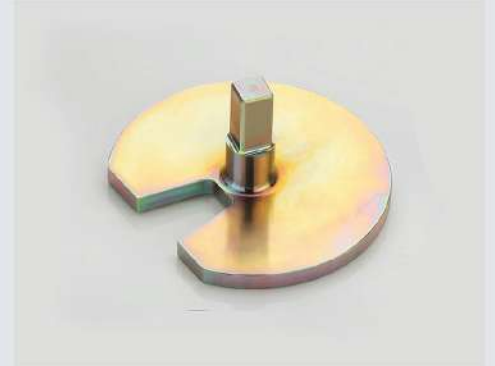
Precision Brass Component



Precision Stainless Steel Component








Precision Mild Steel Component



A High Level Quality Control In Compliance With National And International Standards

Presently, we have successfully reached many countries. Being efficient in providing enough care to all the products delivered and exported, whether nationally or overseas, we have a vast experience in handling. Our trusted agents make sure that the process is done well and that you receive your order perfectly.



 Spain	 Portugal	 Netherlands	 Mexico
 Luxembourg	 Italy	 Israel	 India
 Germany	 France	 Dubai	 Canada
 Brazil	 Austria	 Australia	 USA



 **APCPL**
Your Engineering Partner

Survey No.126, Plot No. 75, SIDC Main Road, Nr. Shantidham,
Veraval (Shapar) – 360024, Dist: Rajkot,(GUJ.) INDIA

www.apcplgroup.com | info@apcplgroup.com | marketing@apcplgroup.com

+91 99099 49953